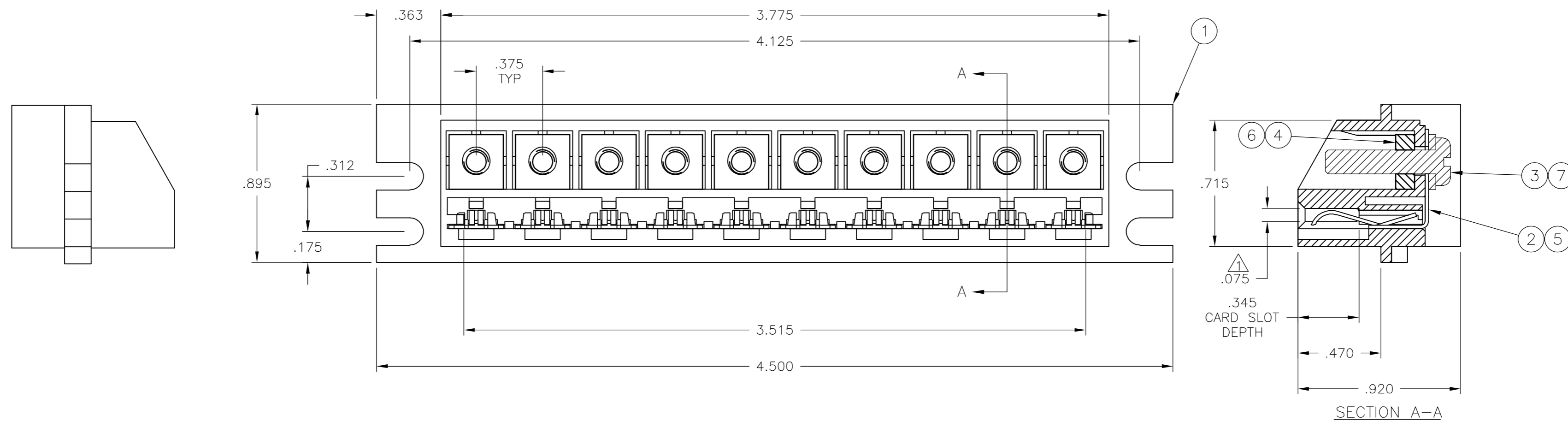
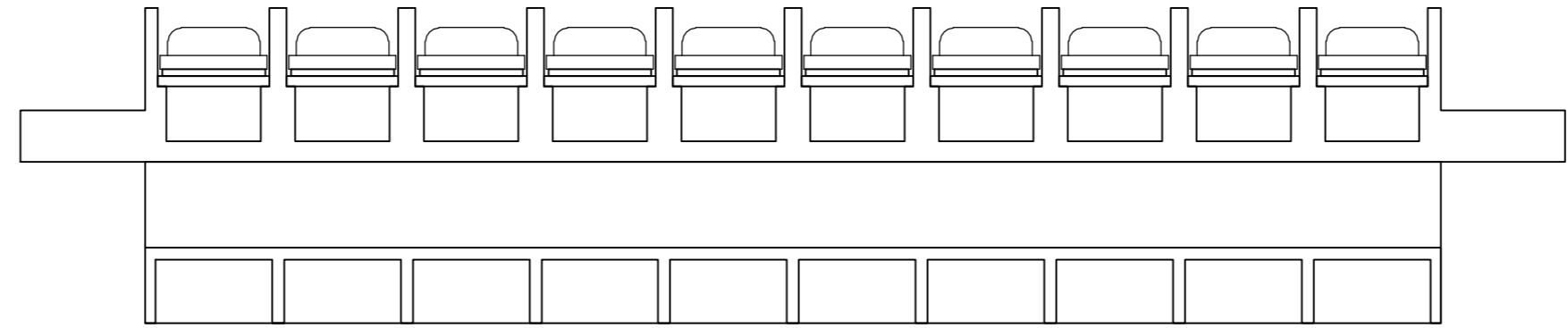
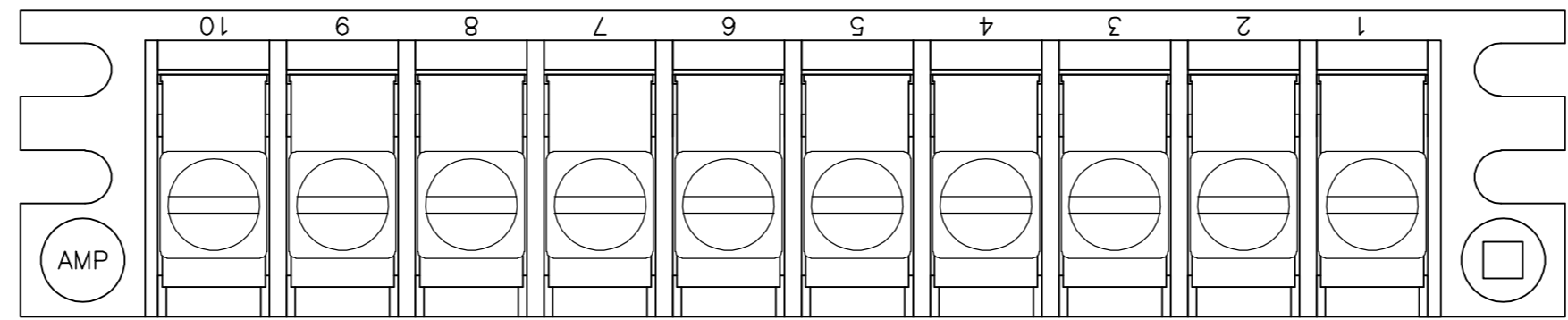


THIS DRAWING IS UNPUBLISHED. RELEASED FOR PUBLICATION
 © COPYRIGHT BY TYCO ELECTRONICS CORPORATION. ALL RIGHTS RESERVED.

LOC	DIST	REVISIONS					
		P	LTR	DESCRIPTION	DATE	DWN	APVD
FT	0	M		REVISED PER ECO-06-11820	5/19/06	SS	DC

- ACCEPTS .062±.007 PCB.
- MAX ALLOWABLE BOW .003 PER INCH OF HOUSING.



QTY	DESCRIPTION	MATERIAL & FINISH	ITEM NO.
10	CLAMP	STEEL, GOLD OVER NICKEL PLATE	7
10	6-32 NUT	STEEL, ZINC W/ NON-HEXAVALENT CHROMATE	6
10	CONTACT	.020 PHOS BRZ, TIN PLATE	5
-	10 6-32 NUT	STEEL, ZINC W/ HEXAVALENT CHROMATE	4
-	10 CLAMP	STEEL, ZINC PLATED	3
-	10 CONTACT	.020 PHOS BRZ, TIN-LEAD PLATE	2
1	1 HOUSING	POLYCARBONATE, COLOR: GRAY	1
-11	-1	DESCRIPTION	MATERIAL & FINISH

THIS DRAWING IS A CONTROLLED DOCUMENT.

DWN	S	SCHLEGEL	28MAR2006
CHK	-	-	-
APVD	-	-	-
PRODUCT SPEC	-	-	-
APPLICATION SPEC	-	-	-
WEIGHT	-	-	-
CUSTOMER DRAWING	SCALE	2:1	SHEET 1 of 1

tyco Electronics Tyco Electronics Corporation
Harrisburg, PA 17105-3608

NAME: EDGE CONNECTOR ASSY, MULTIPLE TAP, 10 CIRCUIT

SIZE: A2 CAGE CODE: 00779 DRAWING NO: 640100 RESTRICTED TO: -

REV: M